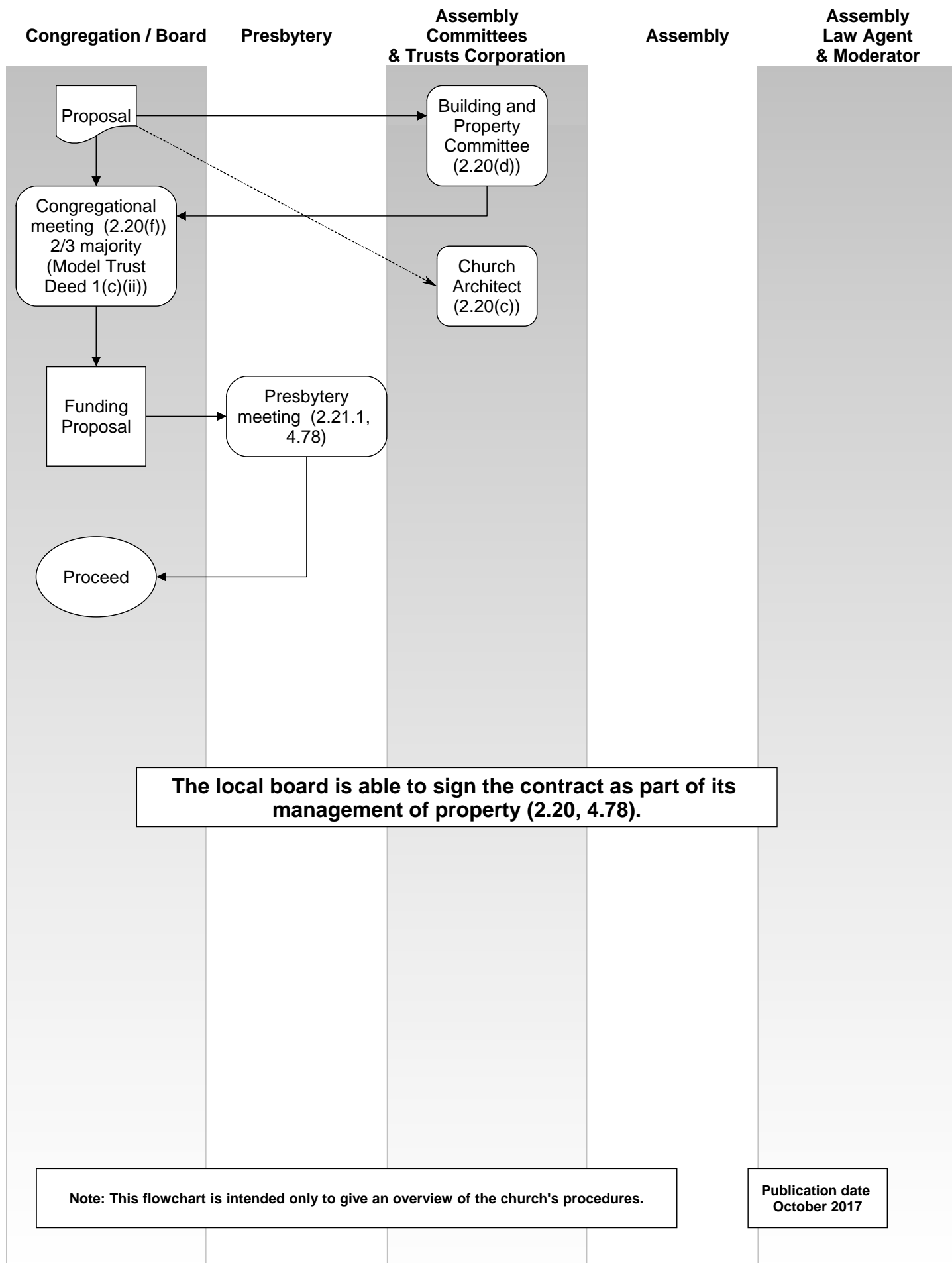
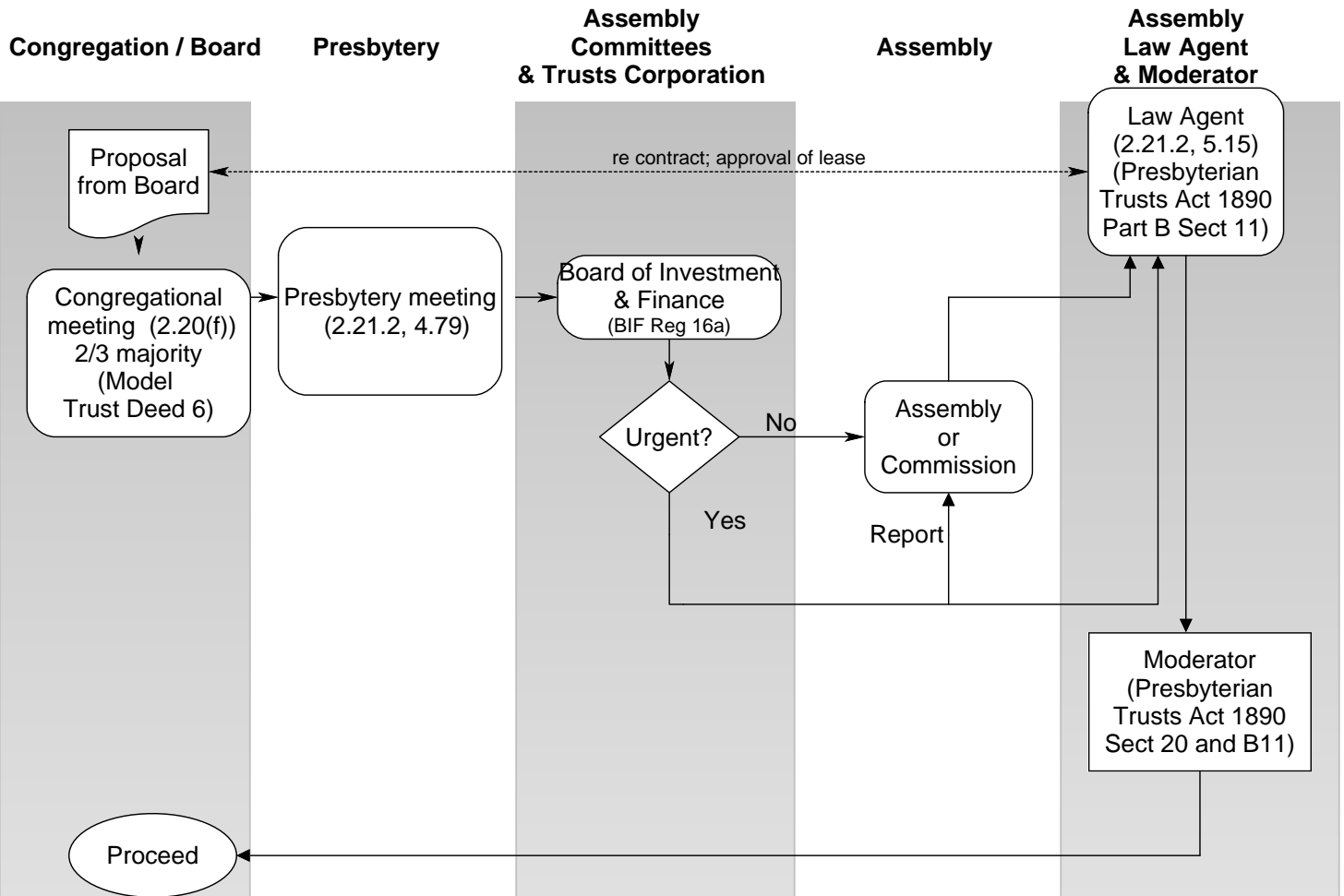


Flowchart of church procedures - Erect, Extend or Alter Buildings



Flowchart of church procedures - Lease of Church Property to a Third Party



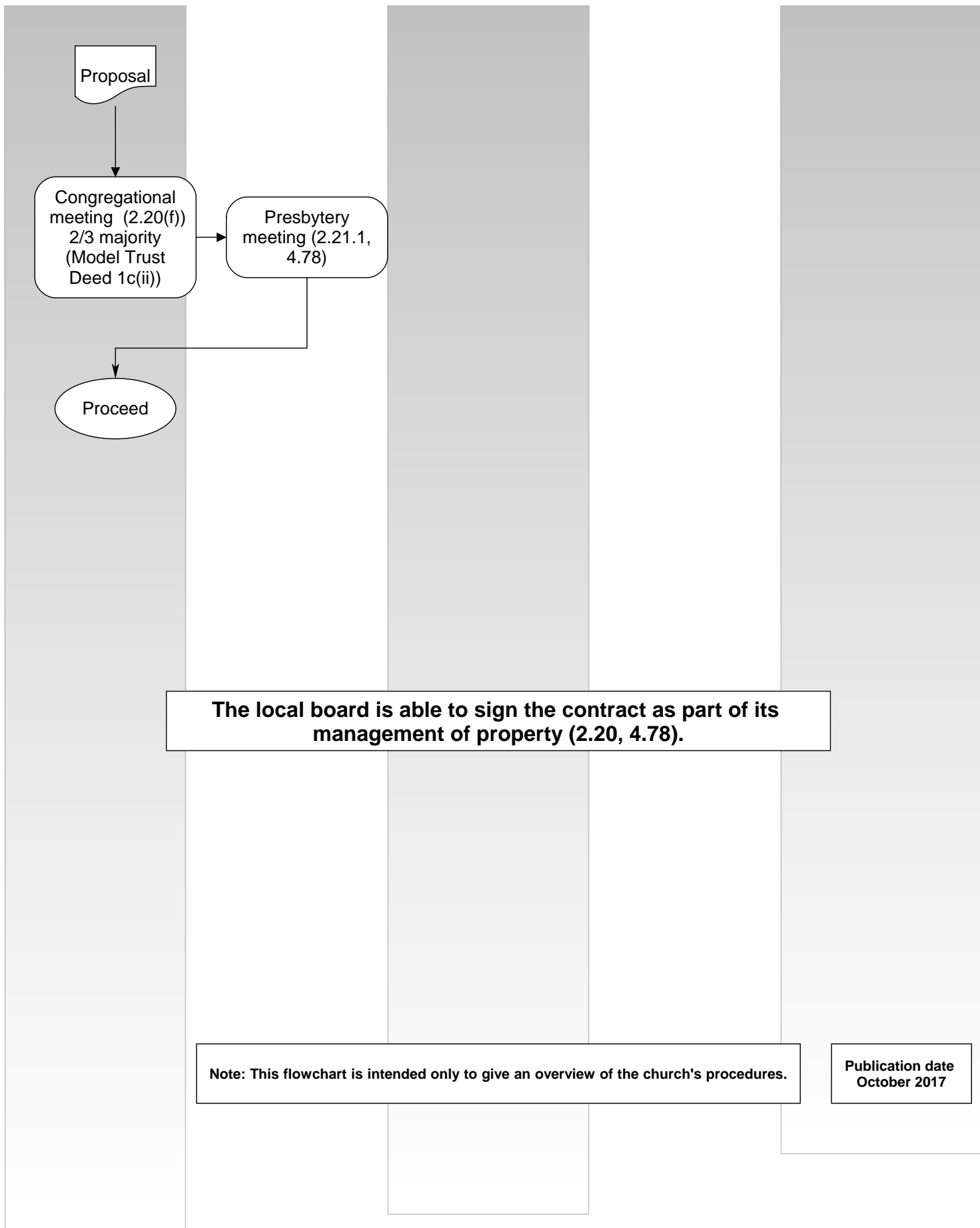
The lease is to be signed by the Trustees, either the Trusts Corporation or local trustees.

Note: This flowchart is intended only to give an overview of the church's procedures.

**Publication date
October 2017**

Flowchart of church procedures - Removal or Demolition of any Building

Congregation / Board	Presbytery	Assembly Committees & Trusts Corporation	Assembly	Assembly Law Agent & Moderator
----------------------	------------	--	----------	--------------------------------------

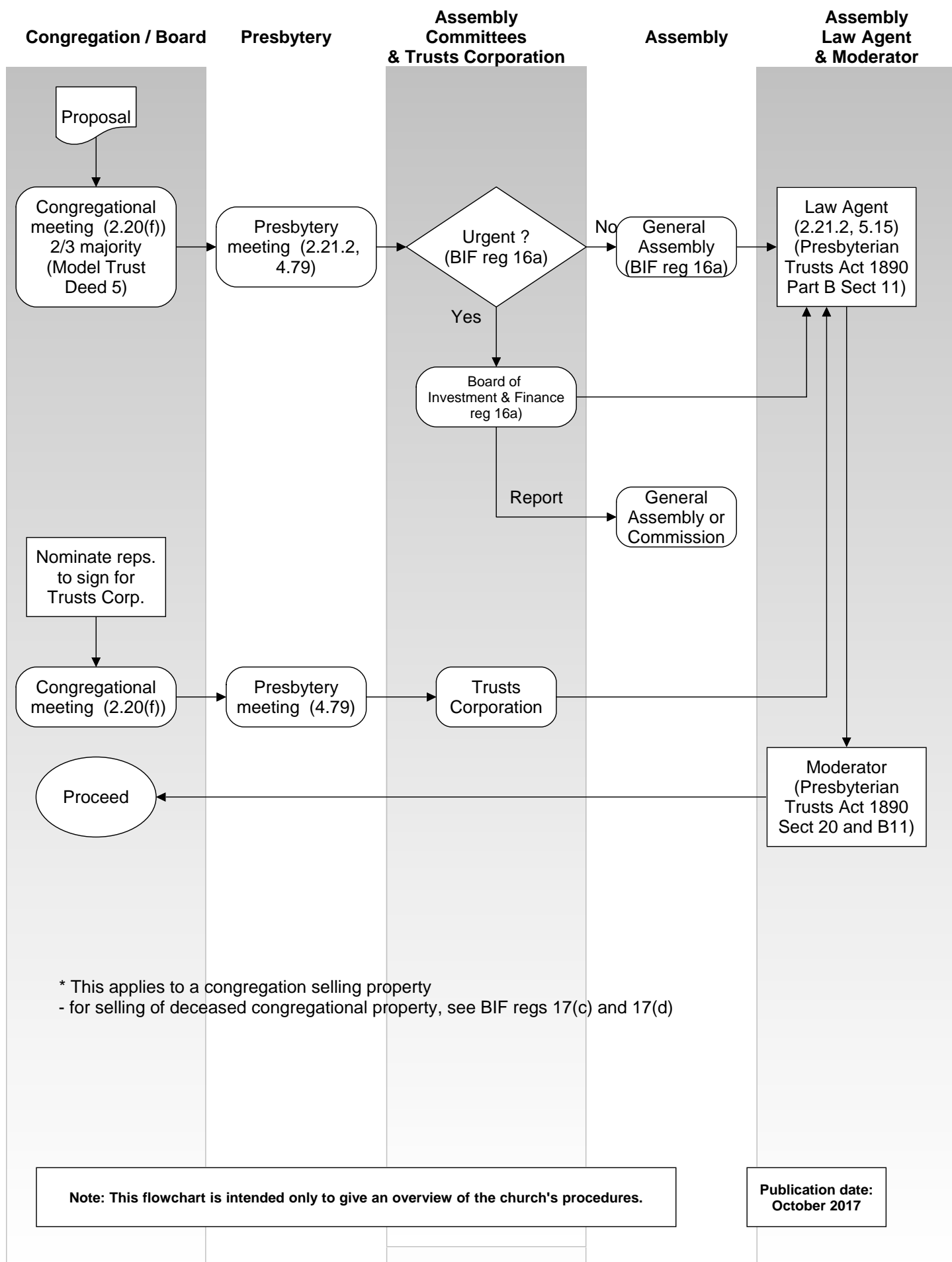


The local board is able to sign the contract as part of its management of property (2.20, 4.78).

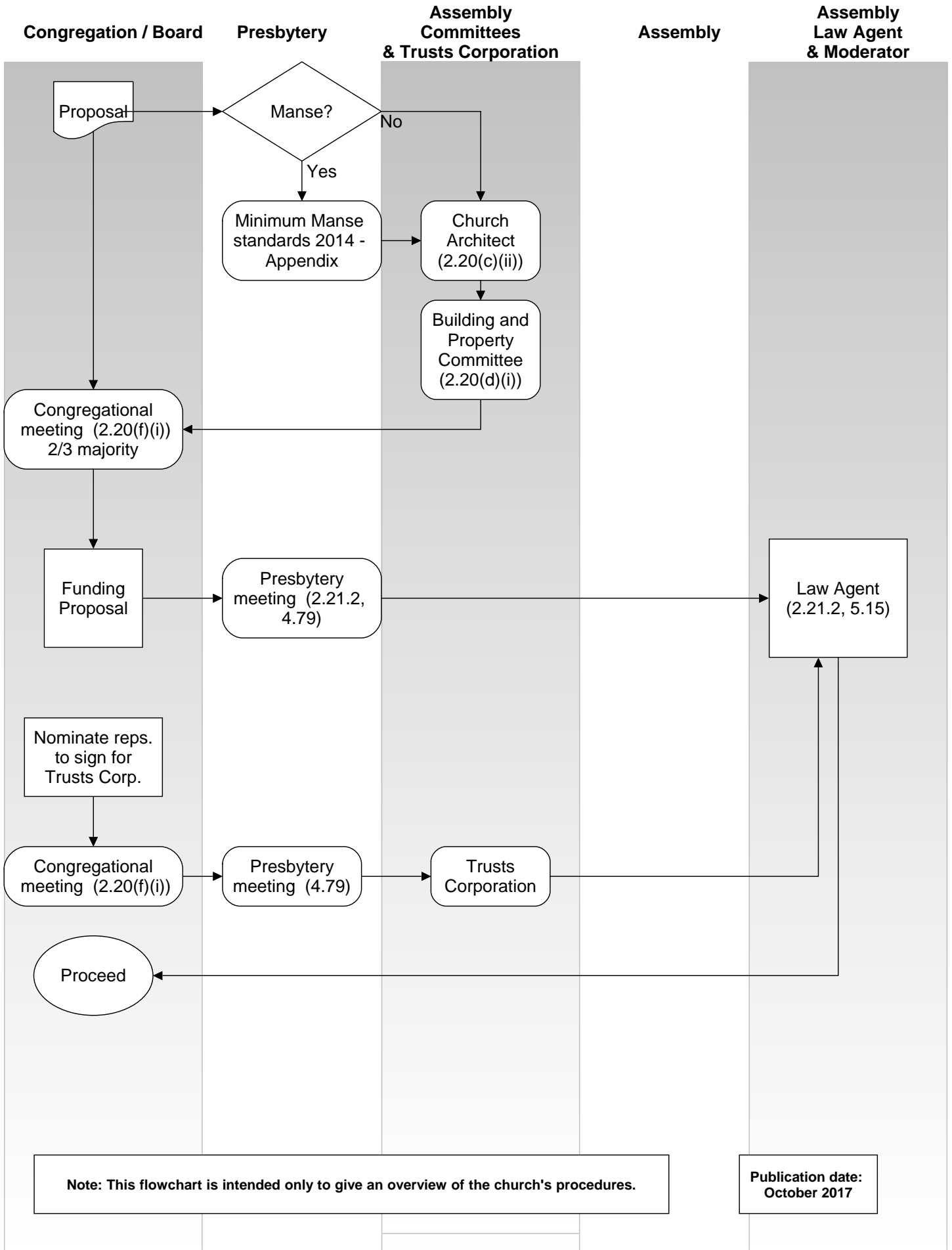
Note: This flowchart is intended only to give an overview of the church's procedures.

**Publication date
October 2017**

Flowchart of church procedures - Sale of Property *



Flowchart of church procedures - Purchase of Property



Note: This flowchart is intended only to give an overview of the church's procedures.

Publication date: October 2017